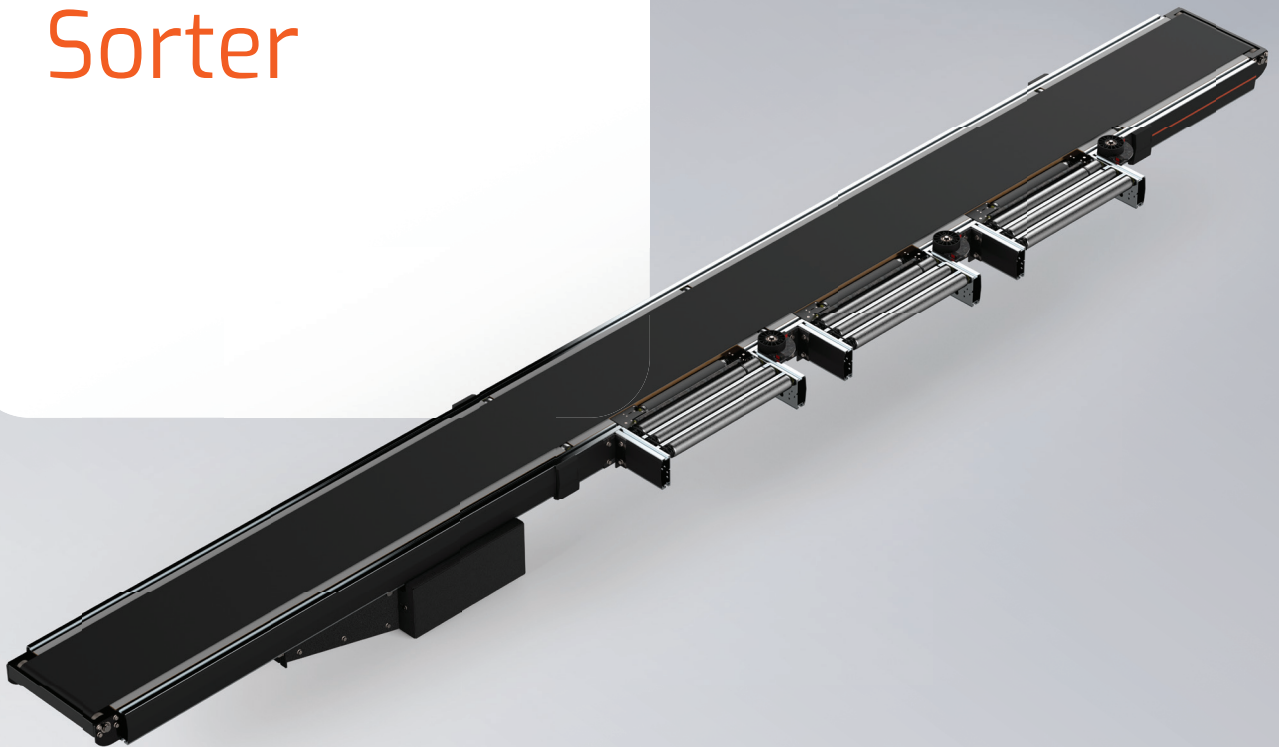




# CPS01

## Carton Pull Sorter



# Smart & flexible

The modular platform of Inther Conveyor Equipment (ICE) is unique due to the short installation and commissioning time. All components (both mechanical and electrical) come pre-installed in our modules, including cabling and the correct E-plan codes.

The smart and flexible modules are available in various widths and are suitable for transporting all common goods in intralogistics.

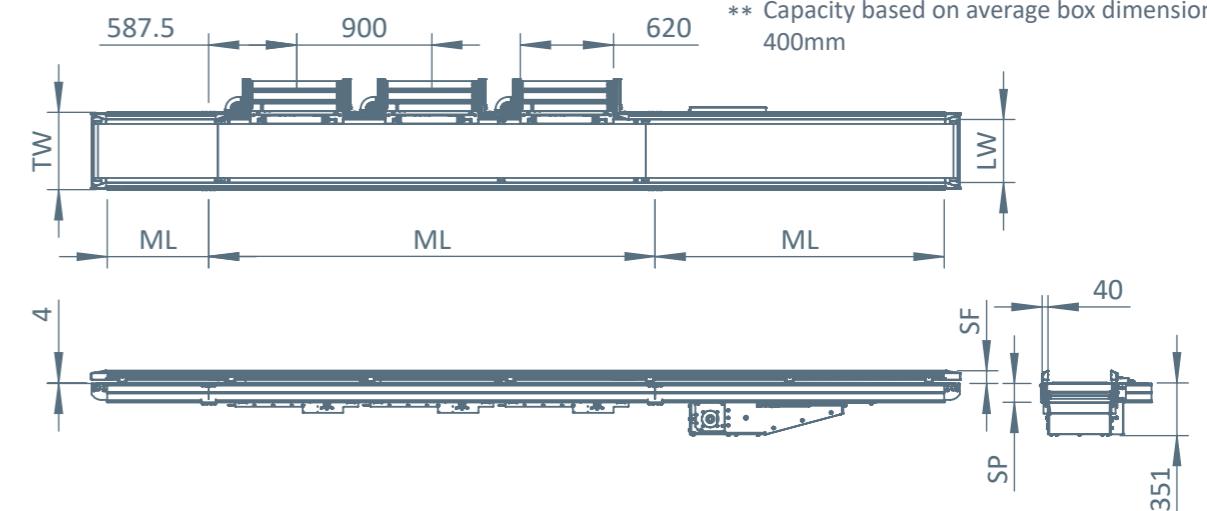


# Carton Pull Sorter

With the CP501 Carton Pull Sorter it's possible to send out packages to sort. The package is pulled out by the driven roller which is covered with rubber for extra grip. The use of the outbound module means heavy mechanics are no longer needed. The Carton Pull Sorter is completely modular, which makes it easy to expand the number of outbound modules in the future.

## Technical specifications

<b>General information</b>		<b>Dimensions</b>	
Max. carrying weight	20 kg per carton*	LW effective width	420
Transport speed	Min. 0.21 / max. 1.1 m/sec.	ML max. module length	10000 mm
Lockout speed	Min. 0.13 / max. 1.28 m/sec.	TW module width	LW + 96 mm
Ambient temperature	+5°C to +40°C	SF side guide	80 mm
<b>Drive transport</b>		<b>Side profile</b>	
Voltage	400V AC / 3-phase	SP Profile height	126 mm
Drive	General drive	<b>Rolling-out mechanism</b>	
Drive coupling	Toothed belt	Material	Steel 1.5 mm, galvanized, with PVC cover for grip
<b>Electric connection conveyor belt</b>		Diameter	50 mm
Connection voltage	400/480V AC 3-phase	Performance	Round head
Nominal current	1.0 - 2.8A	<b>Drive lockout mechanism</b>	
Sensor	Retroreflective, pre-installed and wired	Drive belts	1 DC engine
<b>Electric connection for closing mechanism</b>		Drive coupling	Round belts
Connection voltage	24V DC	Control	Eqube
Connection plug	Screw clamps	Power consumption per motor	3A (in use, Boost8 mode)
<b>Pneumatic connection (per closing mechanism)</b>		<b>Capacity</b>	
Conditioning	ISO8573-1:2010 (7:4:4)	Mechatronic capacity	2000 boxes per hour**
Required air pressure	6-8 bar	* Products to be excluded must be aligned on the side of the exclusion mechanisms prior to running up the conveyor belt	
Required compressed	0.20 l (8 bar) air per cycle	** Capacity based on average box dimensions of 400 x 400mm	



# Inther

## Conveyor Equipment

 The Netherlands (HQ)

 Germany

 Belgium

 Moldova

 USA

 China  
› Shanghai  
› Suzhou



[info@inthergroup.com](mailto:info@inthergroup.com)  
[www.inthergroup.com](http://www.inthergroup.com)

**IN-HER**  
improving intralogistics